

# Our contract solutions



## Computer Futures is a strategic recruitment partner for companies seeking technology talent in Japan.

We help talented IT professionals achieve their professional goals and make strategic career moves. With a proven track record in IT recruitment, we enjoy success across all sectors and business types, placing a candidate every 45 minutes globally.

Types of contract solutions we offer:

1. Haken (Dispatched worker)
2. Gyomu Itaku – Independent contractor model
3. Gyomu Itaku – Employed contractor model (New)



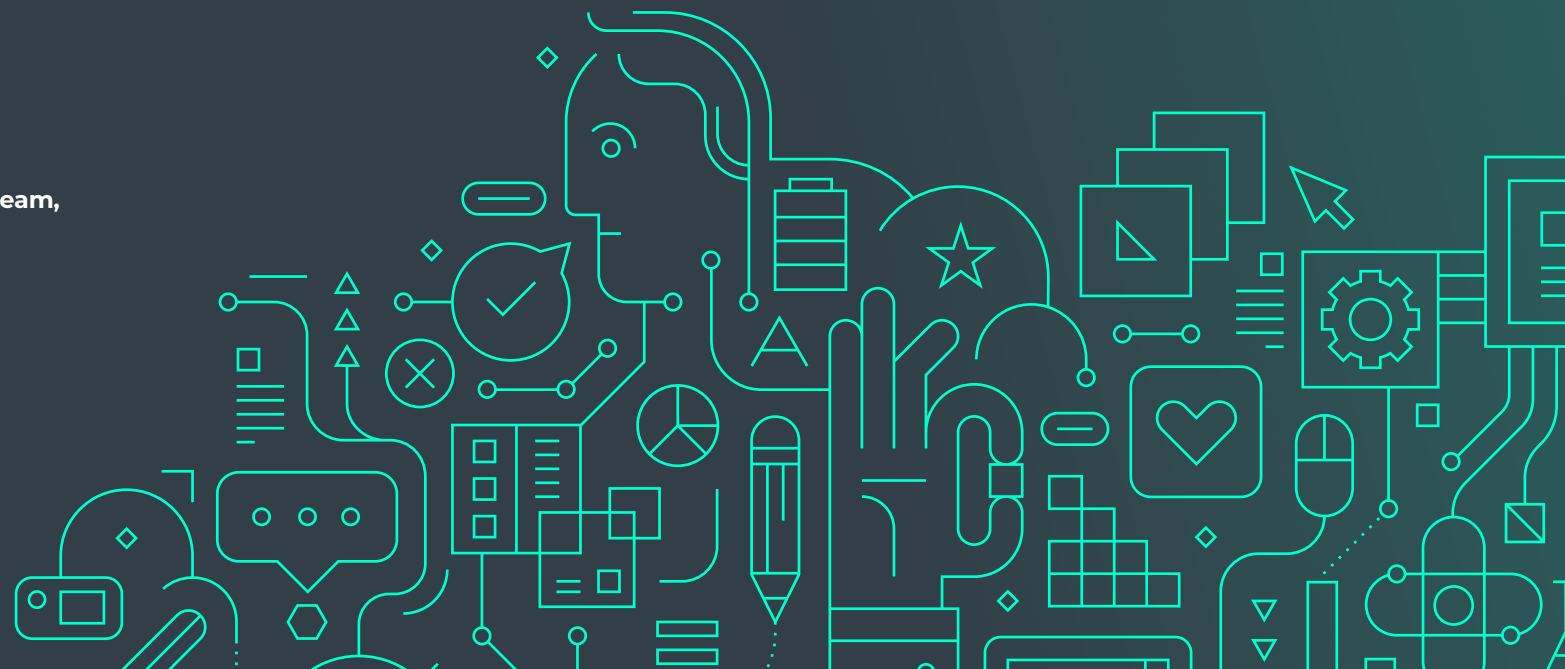
## To find out more or set up a meeting with our team, please contact us:

Kabukiza Tower 9F, 4-12-15 Ginza,  
Chuo-ku, Tokyo, Japan 104-0061

+81 50 3150 9922 (Contracts team)  
+81 50 3150 9933 (Permanent team)  
contactjapan@computerfutures.com  
computerfutures.com

## How contract jobs benefit skilled professionals

- Certainty that you will be able to utilise your IT skills
- Salary per-hour/project can be much higher than permanent employment
- Comparably more flexible way of working
- Faster turn-around time to hire
- A chance to experience various industries and types of projects
- A chance to work in cutting edge or innovative projects and acquire up-to-date skills relevant to the current market so that you can reignite your career trajectory
- Barrier to entry is lower than permanent roles if you'd like to experience a new market or industry



# Our contract solutions

To help you understand the differences between all contract solutions, please refer to the table below:

	Benefit(s)	Consideration(s)
<b>Haken</b>	<ul style="list-style-type: none"> <li>As an employee of SThree*, you will have access to the same benefits as a permanent employee in terms of health insurance, employment insurance, tax management, etc.</li> </ul>	<ul style="list-style-type: none"> <li>Your salary is calculated on an hourly basis, so your income may fluctuate month to month</li> <li>Only organisations of a certain size in Japan leverage a Haken solution, so your options will be limited</li> <li>The level of your assigned projects and tasks may not meet your expectations</li> <li>You're generally expected to work in the office (usually with no remote working options)</li> </ul>
<b>Gyomu Itaku: Independent contractor model</b>	<ul style="list-style-type: none"> <li>Access to bigger, more significant projects</li> <li>Many global companies leverage Gyomu Itaku, so you'll be able to work with some of the world's leading companies</li> <li>A fixed, monthly fee, so you enjoy a stable income</li> <li>Some clients offer remote working options</li> </ul>	<ul style="list-style-type: none"> <li>You must have your own company set up, or be registered as a sole trader (kojin jigyonushi)</li> <li>You'll need to manage your taxes independently</li> <li>No benefits such as health insurance will be provided</li> <li>Clients may terminate your contract anytime, with a notice period of 30 days</li> </ul>
<b>Gyomu Itaku Employed contractor model (New!)</b>	<ul style="list-style-type: none"> <li>As an employee of SThree*, you will have access to the same benefits as a permanent employee in terms of health insurance, employment insurance, tax management, etc.</li> <li>Access to major cutting-edge and innovative projects to upskill yourself</li> <li>Many global companies leverage Gyomu Itaku, so you'll be able to work with some of the world's leading companies</li> <li>A fixed, monthly salary, so you enjoy a stable income</li> <li>Some clients offer remote working options</li> </ul>	

\*Computer Futures is part of the larger SThree group.

